



EPH
I N C O R P O R A D O R A

**We are determined to build real estate projects
that turn into success stories.**

EPH INCORPORADORA

EPH Incorporadora was established in 2012, and over the years their partners have acquired broad knowledge and technical experience in management and expansion of real estate development projects.

Ever since their establishment, **EPH** Incorporadora has already delivered 570 housing units and is going to deliver another 660 units in the next 2 years, relative to projects like Mirante do Portal in the city of Cajamar, and Reserva da Seringueira in the city of São Paulo. Besides that, the 7 launch projects planned for the next 3 years add up to other 2940 housing units. Cities such as São Paulo, Cajamar and Barueri, already show investment in construction works and new launch projects.

Just as they are committed to fulfill the dream of a thousand Brazilian families of having their own house, **EPH** Incorporadora also invests in the future and in the economic development of Brazil. Investments over R\$ 200 million as foreseen for the next 2 years, have contributed to promote Brazil's economy and generate new jobs.

For having a strong entrepreneurial culture always lined up with the real estate market trends, **EPH** Incorporadora has invested in research and development aiming the improvement of the customer experience. Their recent launches already show this reality: the new real estate developments have been planned with outlets for charging electric cars, coworking, space for foodtrucks, space for fruit and vegetable stands, bakery, Wi-Fi preparation in the apartments, specific parking spaces for shared cars, among other items.

In addition to all this, **EPH** Incorporadora is committed to offering competitive products and to fulfilling expectations of quality, integrity and transparency to their customers, partners and suppliers. We are determined to build real estate projects that turn into success stories.



GRIFFE ANHANGUERA



MULTI BARUERI



RESIDENCIAL BOA VISTA ITAPEVI



GRIFFE ITAPEVI



MULTI BARUERI

► DELIVERED PROJECTS



CAJAMAR

- Area: 51,5 and 53 m²
- Units: 150
- 2 Bedroom apartments
- Delivered in September 2017





BOA VISTA ITAPEVI



ITAPEVI

- ▶ Area: 55 and 60 m²
- ▶ Units: 262
- ▶ 2 Bedroom apartments
- ▶ Delivered in March 2018





GRIFFE JORDANO

TABOÃO DA SERRA

- ▶ Area: 48 m²
- ▶ Units: 86
- ▶ 2 Bedroom apartments
- ▶ Delivered in February 2019





GRIFFE SANTA ROSA



TABOÃO DA SERRA

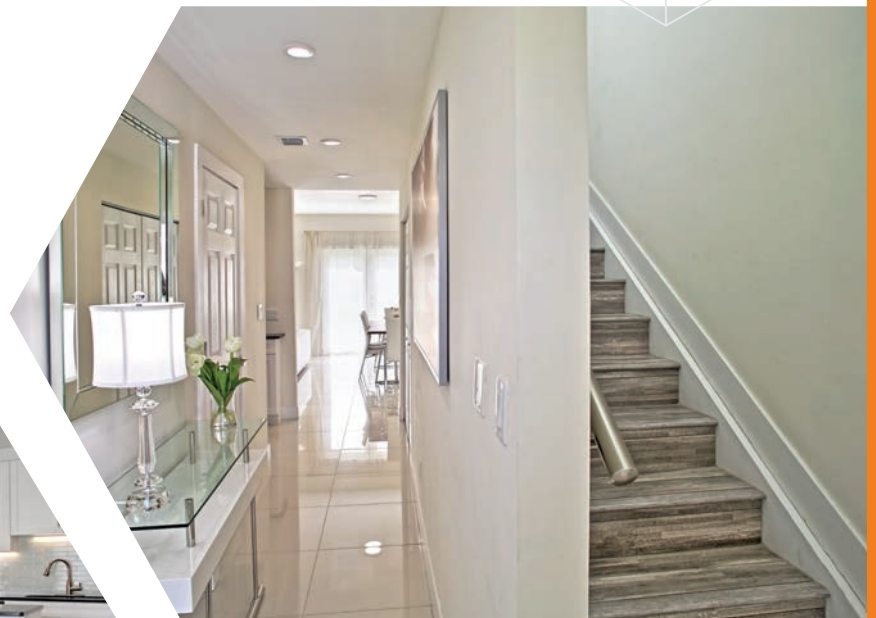
- ▶ Taboão da Serra
- ▶ Area: 48 m²
- ▶ Units: 68
- ▶ 2 Bedroom apartments
- ▶ Delivered in August 2019



EUROPA GARDENS

MIAMI

- ▶ Square Footage: 1480 sf
- ▶ Units: 4
- ▶ 4 Bedroom twin homes
- ▶ Delivered in July 2017





► IN THE WORKS



CAJAMAR

- Area: 48 and 49 m²
- Units: 360
- 2 Bedroom apartments
- Launched in September 2017





RESERVA DA
SERINGUEIRA

SÃO PAULO

- ▶ Area: 49 m²
- ▶ Units: 300
- ▶ 2 Bedroom apartments
- ▶ Launched in December 2017





► LAUNCH PROJECTS



BARUERI

- Area: 55 and 59 m²
- Units: 960
- 2 Bedroom apartments
- To be launched in the first half of 2020



► TO BE LAUNCHED SOON



Griffe

ITAPEVI
Residencial Clube

ITAPEVI

- Area: 50 and 57 m²
- Units: 288
- 2 Bedroom apartments
- To be launched soon





MULTI SAPOPEMBA



SAPOPEMBA - SÃO PAULO

- ▶ Units: 300
- ▶ 2 Bedroom apartments
- ▶ Sales start in second semester of 2021



MULTI CAMPO LIMPO



CAMPO LIMPO - SÃO PAULO

- ▶ Units: 300
- ▶ 2 Bedroom apartments
- ▶ Sales start in second semester of 2021

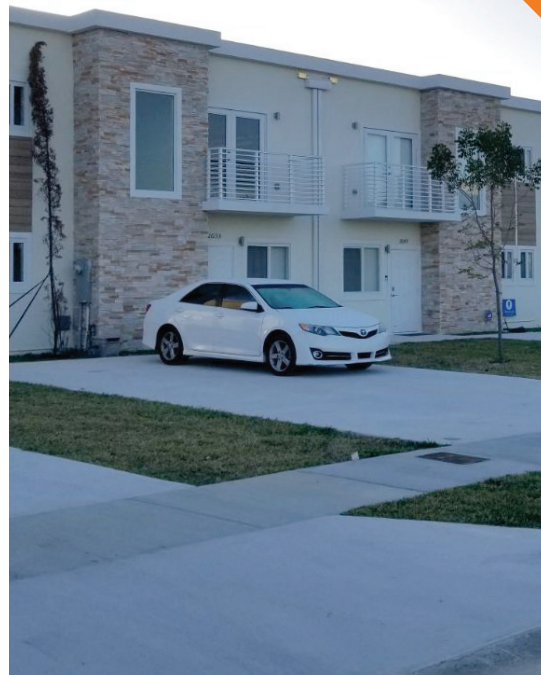




GRACE HOMES

MIAMI

- ▶ Square Footage: 1480 sf
- ▶ Units: 32
- ▶ 4 Bedroom Houses
- ▶ To be launched soon





VILA REAL



JARDIM IAE - SÃO PAULO

- ▶ Units: 200
- ▶ Expected to be launched by 2020



JARDIM SÃO LUIS



JARDIM SÃO LUIS - SÃO PAULO

- ▶ Units: 960
- ▶ Expected to be launched by 2021



EPH
I N C O R P O R A D O R A

www.ephincorporadora.com.br

Follow us on social medias

@ephincorp | /ephincorp

/company/eph-incorporadora